

Courtesy Of Jane Li Of Top West Realty

# \$1,866,000 - 108 Windermere Drive, Edmonton

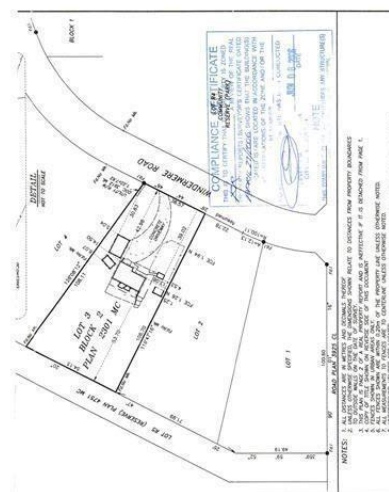
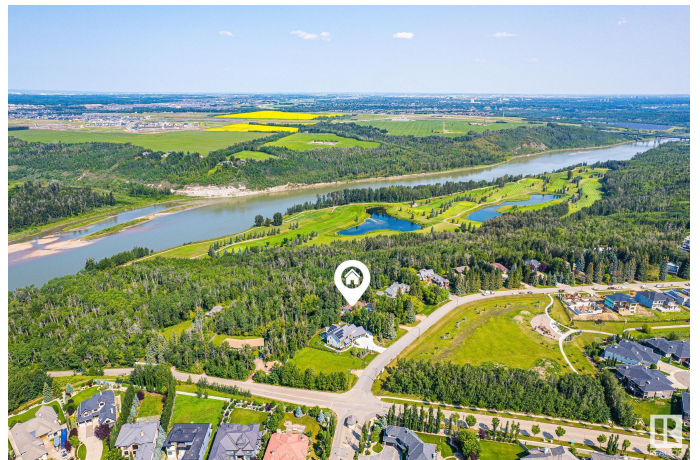
MLS® #E4424459

**\$1,866,000**

0 Bedroom, 3.00 Bathroom,  
Single Family on 0.00 Acres

Windermere, Edmonton, AB

Prestigious country-living right in the city with the opportunity to build your dream home without any compromises. WALKOUT BASEMENT home, a private and secluded PANORAMIC VIEW of the river, river valley and River Ridge golf course, high atop the banks of the North Saskatchewan River. 4,837.10 m<sup>2</sup> / 1.2 acres beautiful park like acreage. 4 Bedrooms, 3 Baths. Master with Ensuite and oversized private outdoor deck with the most EXQUISITE VIEW! Main Floor includes large GREAT ROOM, DINING ROOM, KITCHEN and over 1,000 sq.ft deck. Lower WALKOUT level includes large family ROOM and GAMES ROOM, SUITE including 4th BEDROOM, Triple car garage! No walking trail at the back for extra privacy. One of the best lots in the city. A must see.



## Essential Information

MLS® #	E4424459
Price	\$1,866,000
Bathrooms	3.00
Full Baths	3
Acres	0.00
Type	Single Family
Sub-Type	Vacant Lot/Land
Style	Bungalow

Status Active

### Community Information

Address 108 Windermere Drive  
Area Edmonton  
Subdivision Windermere  
City Edmonton  
County ALBERTA  
Province AB  
Postal Code T6W 0S4

### Amenities

Parking Spaces 6  
Parking Triple Garage Detached

### Interior

Interior Features ensuite bathroom  
Heating Natural Gas

### Exterior

Exterior Features Ravine View, River Valley View, River View

### Additional Information

Date Listed March 7th, 2025  
Days on Market 30  
Zoning Zone 56

DATA IS DEEMED RELIABLE BUT IS NOT GUARANTEED ACCURATE BY THE REALTORS® ASSOCIATION OF EDMONTON. COPYRIGHT 2025 BY THE REALTORS® ASSOCIATION OF EDMONTON. ALL RIGHTS RESERVED. Trademarks are owned or controlled by the Canadian Real Estate Association (CREA) and identify real estate professionals who are members of CREA (REALTOR®, REALTORS®) and/or the quality of services they provide (MLS®, Multiple Listing Service®)

Listing information last updated on April 6th, 2025 at 4:17pm MDT