

\$799,000 - 11 Harley Way, Spruce Grove

MLS® #E4427764

\$799,000

3 Bedroom, 3.50 Bathroom, 2,674 sqft
Single Family on 0.00 Acres

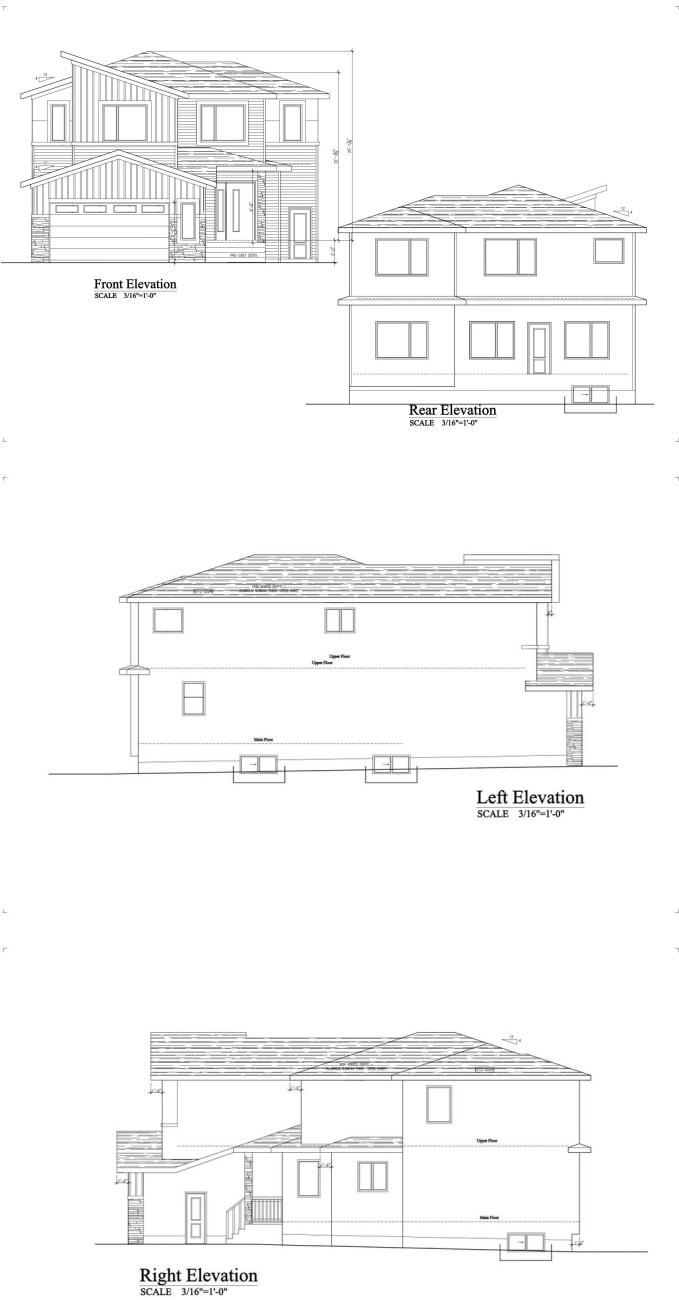
Hilldowns, Spruce Grove, AB

Welcome to your luxurious 2,675 sq. ft. home in the heart of Spruce Grove! Featuring an oversized double-attached garage and 9 ft ceilings on all three levels, this home offers a spacious, open feel. The main floor boasts a versatile office/den, a modern powder room, and a stunning open-to-below living area with a feature wall and electric fireplace. The gourmet kitchen impresses with ceiling-height cabinetry, quartz countertops, a walk-through pantry, and a mudroom. Upstairs, three primary bedrooms each offer a private ensuite and walk-in closet, alongside a bonus room and laundry room. High-end finishes, a separate side entrance to the basement, and a prime location near parks, shopping, and major roadways make this home an exceptional choice. Photos are from a similar home; actual finishes may vary.

Built in 2025

Essential Information

MLS® #	E4427764
Price	\$799,000
Bedrooms	3
Bathrooms	3.50
Full Baths	3
Half Baths	1
Square Footage	2,674



Acres	0.00
Year Built	2025
Type	Single Family
Sub-Type	Detached Single Family
Style	2 Storey
Status	Active

Community Information

Address	11 Harley Way
Area	Spruce Grove
Subdivision	Hilldowns
City	Spruce Grove
County	ALBERTA
Province	AB
Postal Code	T7X 0X4

Amenities

Amenities	Ceiling 9 ft., Parking-Extra
Parking	Double Garage Attached

Interior

Interior Features	ensuite bathroom
Appliances	Garage Control, Garage Opener, Hood Fan, Builder Appliance Credit
Heating	Forced Air-1, Natural Gas
Stories	2
Has Basement	Yes
Basement	Full, Unfinished

Exterior

Exterior	Wood, Vinyl
Exterior Features	Golf Nearby, Playground Nearby, Public Transportation, Schools, Shopping Nearby
Roof	Asphalt Shingles
Construction	Wood, Vinyl
Foundation	Concrete Perimeter

Additional Information

Date Listed	March 27th, 2025
Days on Market	25

Zoning

Zone 91

DATA IS DEEMED RELIABLE BUT IS NOT GUARANTEED ACCURATE BY THE REALTORS® ASSOCIATION OF EDMONTON. COPYRIGHT 2025 BY THE REALTORS® ASSOCIATION OF EDMONTON. ALL RIGHTS RESERVED. Trademarks are owned or controlled by the Canadian Real Estate Association (CREA) and identify real estate professionals who are members of CREA (REALTOR®, REALTORS®) and/or the quality of services they provide (MLS®, Multiple Listing Service®)

Listing information last updated on April 21st, 2025 at 1:32am MDT