

# \$519,900 - 2497 Kelly Circle Circle, Edmonton

MLS® #E4429164

**\$519,900**

3 Bedroom, 3.00 Bathroom, 1,797 sqft  
Single Family on 0.00 Acres

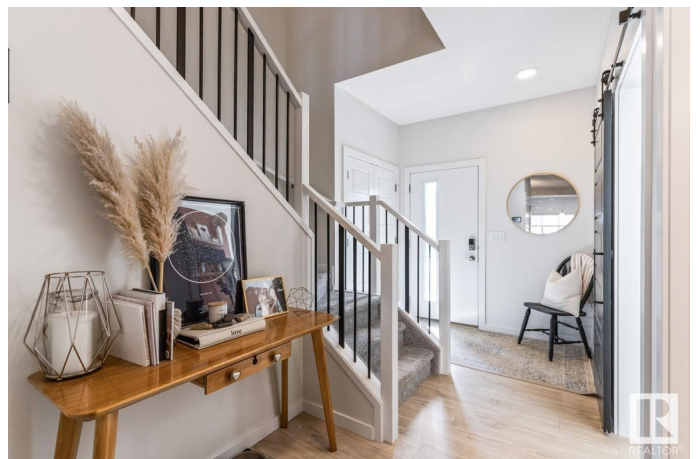
Keswick Area, Edmonton, AB

Modern Smart Home with Luxury Finishes. This Landmark-built smart home is designed for modern living with Alexa and Google Home compatibility. Featuring 3 bedrooms plus an office and den, 3 full bathrooms, and a bonus room, it offers ample space and functionality. Enjoy 9-foot ceilings, vinyl plank flooring, and quartz countertops throughout. The stunning two-toned kitchen boasts stainless steel appliances, a subway tile backsplash, and custom California Closets at the back entrance. Upgrades include solar panels and a tankless hot water system, HRV and AC. The low-maintenance yard is beautifully landscaped with artificial turf. A poured double parking pad awaits your garage build. Close to schools, shopping, and public transportation, this is a must-see and a fantastic opportunity to get into the thriving community of Keswick.

Built in 2020

## Essential Information

MLS® #	E4429164
Price	\$519,900
Bedrooms	3
Bathrooms	3.00
Full Baths	3
Square Footage	1,797



Acres	0.00
Year Built	2020
Type	Single Family
Sub-Type	Detached Single Family
Style	2 Storey
Status	Active

### **Community Information**

Address	2497 Kelly Circle Circle
Area	Edmonton
Subdivision	Keswick Area
City	Edmonton
County	ALBERTA
Province	AB
Postal Code	T6W 4K2

### **Amenities**

Amenities	Air Conditioner, Ceiling 9 ft., Closet Organizers, Deck, Hot Water Tankless, Smart/Program. Thermostat, HRV System
Parking	Front Drive Access, Parking Pad Cement/Paved

### **Interior**

Interior Features	ensuite bathroom
Appliances	Air Conditioning-Central, Dishwasher-Built-In, Dryer, Hood Fan, Oven-Microwave, Refrigerator, Washer, Window Coverings
Heating	Forced Air-1, Natural Gas
Stories	2
Has Basement	Yes
Basement	Full, Unfinished

### **Exterior**

Exterior	Wood, Vinyl
Exterior Features	Fenced, Landscaped, Low Maintenance Landscape, Recreation Use, Schools, Shopping Nearby
Roof	Asphalt Shingles
Construction	Wood, Vinyl
Foundation	Concrete Perimeter

### **Additional Information**

Date Listed	April 4th, 2025
-------------	-----------------

Days on Market 2

Zoning Zone 56

DATA IS DEEMED RELIABLE BUT IS NOT GUARANTEED ACCURATE BY THE REALTORS® ASSOCIATION OF EDMONTON. COPYRIGHT 2025 BY THE REALTORS® ASSOCIATION OF EDMONTON. ALL RIGHTS RESERVED. Trademarks are owned or controlled by the Canadian Real Estate Association (CREA) and identify real estate professionals who are members of CREA (REALTOR®, REALTORS®) and/or the quality of services they provide (MLS®, Multiple Listing Service®)

Listing information last updated on April 6th, 2025 at 4:17am MDT