

\$350,000 - 11016 166 Avenue, Edmonton

MLS® #E4431146

\$350,000

5 Bedroom, 2.50 Bathroom, 1,205 sqft

Single Family on 0.00 Acres

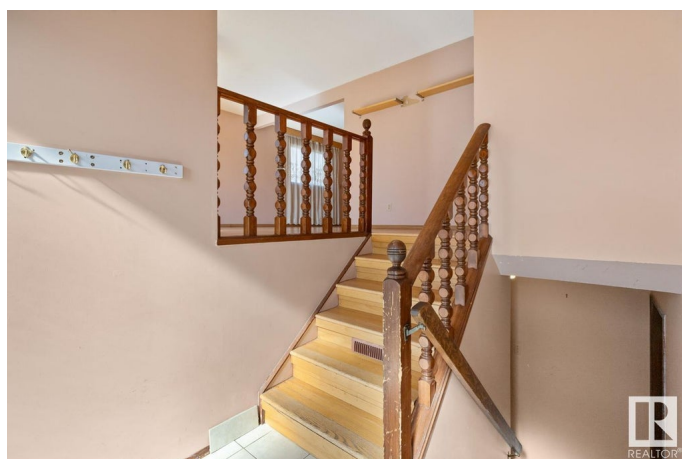
Lorelei, Edmonton, AB

Tons of potential in this Lorelei bi-level, featuring 5 bedrooms, 2.5 baths, **SECOND KITCHEN** & oversized **DOUBLE** garage. Hardwood floors throughout the family sized living room & dining area. The eat in kitchen offers plenty of cabinets. King sized primary with 2pc ensuite. 2 more generous sized bedrooms & 4pc bath complement the functional layout. The basement offers a good sized living room, second kitchen, 2 bedrooms, 4pc bath & tons of storage space. Fenced & landscaped yard with patio and access to the double garage. Awesome location, steps away from parks, trails, shopping & all amenities

Built in 1976

Essential Information

MLS® #	E4431146
Price	\$350,000
Bedrooms	5
Bathrooms	2.50
Full Baths	2
Half Baths	1
Square Footage	1,205
Acres	0.00
Year Built	1976
Type	Single Family
Sub-Type	Detached Single Family



Style	Bi-Level
Status	Active

Community Information

Address	11016 166 Avenue
Area	Edmonton
Subdivision	Lorelei
City	Edmonton
County	ALBERTA
Province	AB
Postal Code	T5X 1Y3

Amenities

Amenities	Patio, See Remarks
Parking	Double Garage Detached, Over Sized

Interior

Interior Features	ensuite bathroom
Appliances	Dryer, Refrigerator, Stove-Electric, Washer
Heating	Forced Air-1, Natural Gas
Stories	2
Has Basement	Yes
Basement	Full, Partially Finished

Exterior

Exterior	Wood, Vinyl
Exterior Features	Cul-De-Sac, Fenced, Landscaped, Playground Nearby, Public Transportation, Schools, Shopping Nearby, See Remarks
Roof	Asphalt Shingles
Construction	Wood, Vinyl
Foundation	Concrete Perimeter

Additional Information

Date Listed	April 16th, 2025
Days on Market	4
Zoning	Zone 27

DATA IS DEEMED RELIABLE BUT IS NOT GUARANTEED ACCURATE BY THE REALTORS® ASSOCIATION OF EDMONTON. COPYRIGHT 2025 BY THE REALTORS® ASSOCIATION OF EDMONTON. ALL RIGHTS RESERVED. Trademarks are owned or controlled by the Canadian Real Estate Association (CREA) and identify real estate professionals who are members of CREA (REALTOR®, REALTORS®) and/or the quality of services they

provide (MLS®®, Multiple Listing Service®®)
Listing information last updated on April 20th, 2025 at 4:47am MDT