

\$739,900 - 9708 224 Street, Edmonton

MLS® #E4440401

\$739,900

5 Bedroom, 3.00 Bathroom, 2,530 sqft

Single Family on 0.00 Acres

Secord, Edmonton, AB

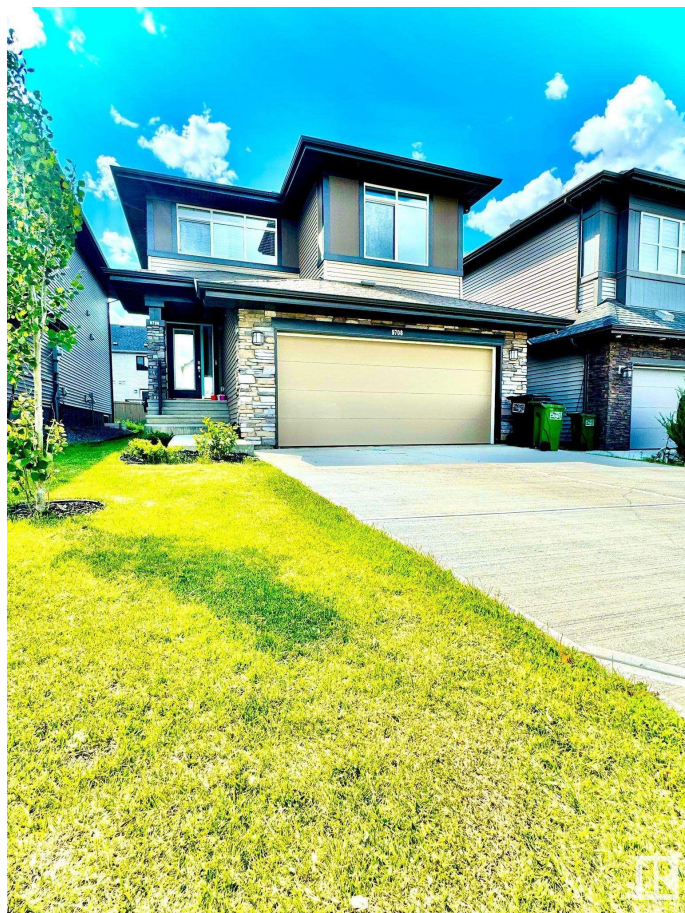
Welcome to this stunning 2,530 sq ft home located in the heart of Edmonton's sought-after community of Secord! Thoughtfully designed and packed with upgrades, this spacious home features 9 ft ceilings on both the main floor and basement, creating a bright and open feel throughout. The main floor includes a bedroom with a full attached bathroom, a dedicated study/office, and stylish waterproof laminate flooring that's perfect for modern living. The chef's kitchen boasts upgraded appliances, including a gas range hood, and flows seamlessly into the large living and dining areas – ideal for entertaining. Upstairs offers Huge 4 bedrooms and contemporary finishes throughout. Built with quality in mind, this home features interior walls with 16-inch stud spacing, enhancing structural durability and noise insulation. The unfinished basement includes 9 ft ceilings and is ready for your personal touch with plumbing and laundry rough-ins already in place. Additional features include a double attached garage.

Built in 2022

Essential Information

MLS® # E4440401

Price \$739,900



Bedrooms	5
Bathrooms	3.00
Full Baths	3
Square Footage	2,530
Acres	0.00
Year Built	2022
Type	Single Family
Sub-Type	Detached Single Family
Style	2 Storey
Status	Active

Community Information

Address	9708 224 Street
Area	Edmonton
Subdivision	Secord
City	Edmonton
County	ALBERTA
Province	AB
Postal Code	T5T 7P4

Amenities

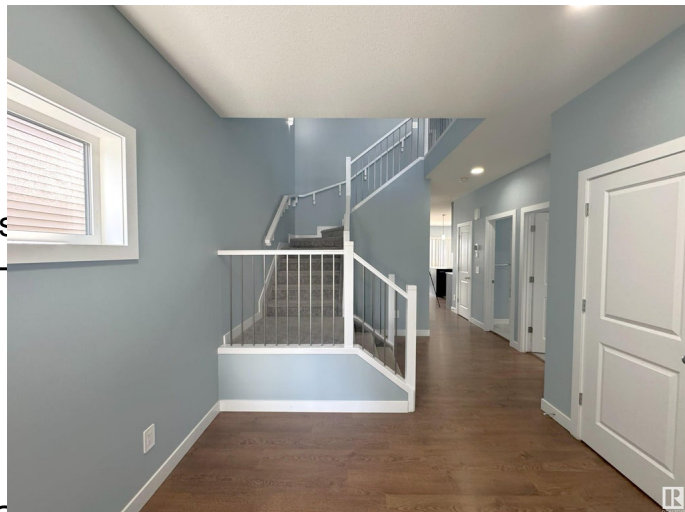
Amenities	Carbon Monoxide Detectors, System, Natural Gas Stove H
Parking	Double Garage Attached

Interior

Interior Features	ensuite bathroom
Appliances	Dishwasher-Built-In, Dryer, Garage Control, Garage Opener, Hood Fan, Refrigerator, Stove-Gas, Washer, Curtains and Blinds
Heating	Forced Air-1, Natural Gas
Stories	2
Has Basement	Yes
Basement	Full, Unfinished

Exterior

Exterior	Concrete, Stone, Vinyl
Exterior Features	Fruit Trees/Shrubs, Landscaped, Playground Nearby
Roof	Asphalt Shingles
Construction	Concrete, Stone, Vinyl



Foundation Concrete Perimeter

Additional Information

Date Listed June 4th, 2025
Days on Market 7
Zoning Zone 58

DATA IS DEEMED RELIABLE BUT IS NOT GUARANTEED ACCURATE BY THE REALTORS® ASSOCIATION OF EDMONTON. COPYRIGHT 2025 BY THE REALTORS® ASSOCIATION OF EDMONTON. ALL RIGHTS RESERVED.Trademarks are owned or controlled by the Canadian Real Estate Association (CREA) and identify real estate professionals who are members of CREA (REALTOR®, REALTORS®) and/or the quality of services they provide (MLS®, Multiple Listing Service®)
Listing information last updated on June 10th, 2025 at 10:02pm MDT