

\$789,000 - 19 Mission Avenue, St. Albert

MLS® #E4441003

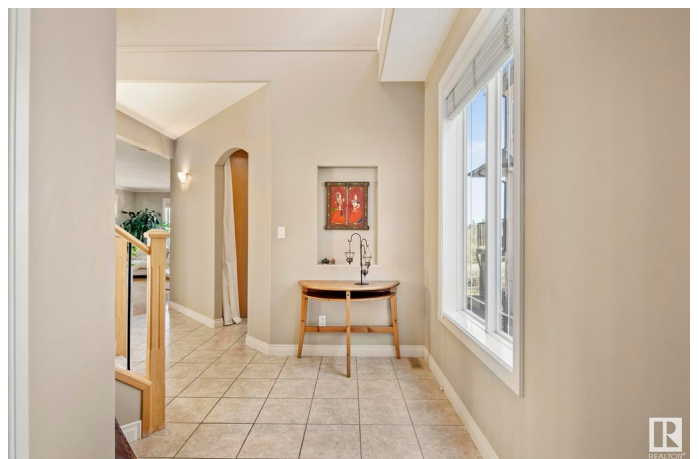
\$789,000

5 Bedroom, 3.50 Bathroom, 2,725 sqft

Single Family on 0.00 Acres

Mission (St. Albert), St. Albert, AB

WAKE UP TO RIVER VIEWS in this truly unique home fronting the STURGEON RIVER, with a WALKOUT LEGAL BASEMENT SUITE that's perfect for a HOME-BASED BUSINESS, MULTI-GENERATIONAL LIVING, or INCOME/AIRBNB. Located in the desirable community of Mission—just steps from downtown St. Albert—this well-maintained home welcomes you with a grand open-to-above foyer and a spacious kitchen with gas stove, granite counters, and ceiling-height cabinets. Light pours into the living and dining rooms, where you can step onto your southeast-facing balcony and soak in the sun with river views. Upstairs, unwind in your massive primary retreat with vaulted ceilings, fireplace, 5PC ensuite w/ jet tub, and walk-in closet. A BONUS ROOM, three more bedrooms, and a full bath complete the upper level. Downstairs, the bright walkout suite has its own kitchen, laundry, and private entrance. From river walks to the Farmers Market to launching your kayak right across the road—this home offers a lifestyle to fall in love with.



Built in 2005

Essential Information

MLS® # E4441003

Price \$789,000

Bedrooms	5
Bathrooms	3.50
Full Baths	3
Half Baths	1
Square Footage	2,725
Acres	0.00
Year Built	2005
Type	Single Family
Sub-Type	Detached Single Family
Style	2 Storey
Status	Active

Community Information

Address	19 Mission Avenue
Area	St. Albert
Subdivision	Mission (St. Albert)
City	St. Albert
County	ALBERTA
Province	AB
Postal Code	T8N 1H6

Amenities

Amenities	Exterior Walls- 2"x6", Hot Water Natural Gas, No Animal Home, No Smoking Home, Parking-Extra, Walkout Basement, Natural Gas BBQ Hookup
Parking Spaces	4
Parking	Double Garage Attached

Interior

Interior Features	ensuite bathroom
Appliances	Dryer, Garage Control, Garage Opener, Oven-Microwave, Stacked Washer/Dryer, Stove-Electric, Stove-Gas, Washer, Refrigerators-Two, Dishwasher-Two
Heating	Forced Air-1, In Floor Heat System, Natural Gas
Fireplace	Yes
Fireplaces	Corner, Mantel, Tile Surround
Stories	3
Has Suite	Yes
Has Basement	Yes

Basement	Full, Finished
----------	----------------

Exterior

Exterior	Wood, Stone, Stucco
----------	---------------------

Exterior Features	Back Lane, Backs Onto Park/Trees, Playground Nearby, Ravine View, River View, Schools, Shopping Nearby
-------------------	--

Roof	Asphalt Shingles
------	------------------

Construction	Wood, Stone, Stucco
--------------	---------------------

Foundation	Concrete Perimeter
------------	--------------------

School Information

Elementary	Ronald Harvey, B.K
------------	--------------------

Middle	WD Cuts, VJM
--------	--------------

High	Bellerose, SACHS
------	------------------

Additional Information

Date Listed	June 6th, 2025
-------------	----------------

Days on Market	13
----------------	----

Zoning	Zone 24
--------	---------

DATA IS DEEMED RELIABLE BUT IS NOT GUARANTEED ACCURATE BY THE REALTORS® ASSOCIATION OF EDMONTON. COPYRIGHT 2025 BY THE REALTORS® ASSOCIATION OF EDMONTON. ALL RIGHTS RESERVED.Trademarks are owned or controlled by the Canadian Real Estate Association (CREA) and identify real estate professionals who are members of CREA (REALTOR®, REALTORS®) and/or the quality of services they provide (MLS®, Multiple Listing Service®)

Listing information last updated on June 19th, 2025 at 9:03am MDT