

\$339,900 - 34 18230 104a Street, Edmonton

MLS® #E4445420

\$339,900

3 Bedroom, 2.50 Bathroom, 1,422 sqft

Condo / Townhouse on 0.00 Acres

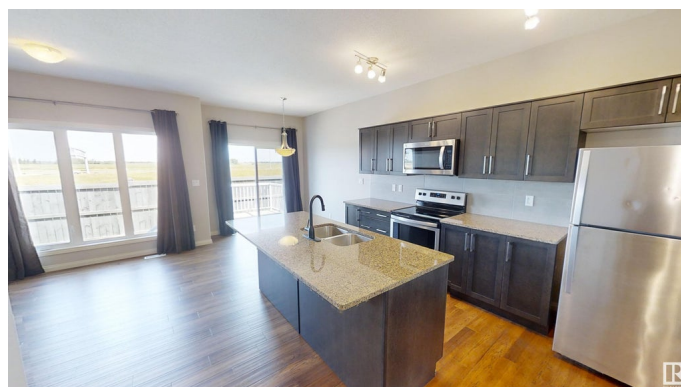
Elsinore, Edmonton, AB

Welcome to your new home in the community of Elsinore, located in the city's north end. Your end-unit townhome features 3 beds, 2.5 baths, a walk-in closet & ensuite in the primary bedroom, upper floor laundry w/ storage, stainless steel kitchen appliances, granite countertops, a gas fireplace, and a single attached garage w/ extra parking on the driveway. There are also additional visitor parking stalls located right outside for added convenience. This home has no rear neighbors and is located in a quiet, family-oriented neighbourhood just off of the Anthony Henday, with multiple parks, walking paths, and transit stops nearby. If you're looking for an affordable home with great value, convenience, and a quick possession then this home is for you!

Built in 2015

Essential Information

MLS® #	E4445420
Price	\$339,900
Bedrooms	3
Bathrooms	2.50
Full Baths	2
Half Baths	1
Square Footage	1,422
Acres	0.00



Year Built	2015
Type	Condo / Townhouse
Sub-Type	Townhouse
Style	2 Storey
Status	Active

Community Information

Address	34 18230 104a Street
Area	Edmonton
Subdivision	Elsinore
City	Edmonton
County	ALBERTA
Province	AB
Postal Code	T5X 0G9

Amenities

Amenities	On Street Parking, Deck, Detectors Smoke, Front Porch, Parking-Visitor, Vinyl Windows
Parking Spaces	2
Parking	Single Garage Attached

Interior

Interior Features	ensuite bathroom
Appliances	Dishwasher-Built-In, Dryer, Garage Control, Garage Opener, Oven-Microwave, Refrigerator, Stove-Electric, Washer
Heating	Forced Air-1, Natural Gas
Fireplace	Yes
Fireplaces	Corner, Mantel
Stories	2
Has Basement	Yes
Basement	Full, Unfinished

Exterior

Exterior	Wood, Stone, Vinyl
Exterior Features	Landscaped, Paved Lane, Playground Nearby, Public Transportation, Schools, Shopping Nearby, Partially Fenced
Roof	Asphalt Shingles
Construction	Wood, Stone, Vinyl
Foundation	Concrete Perimeter

Additional Information

Date Listed	July 2nd, 2025
Days on Market	12
Zoning	Zone 27
Condo Fee	\$309

DATA IS DEEMED RELIABLE BUT IS NOT GUARANTEED ACCURATE BY THE REALTORS® ASSOCIATION OF EDMONTON. COPYRIGHT 2025 BY THE REALTORS® ASSOCIATION OF EDMONTON. ALL RIGHTS RESERVED.Trademarks are owned or controlled by the Canadian Real Estate Association (CREA) and identify real estate professionals who are members of CREA (REALTOR®, REALTORS®) and/or the quality of services they provide (MLS®, Multiple Listing Service®)

Listing information last updated on July 14th, 2025 at 2:32pm MDT