

\$199,900 - 79 150 Edwards Drive, Edmonton

MLS® #E4449495

\$199,900

2 Bedroom, 1.00 Bathroom, 752 sqft

Condo / Townhouse on 0.00 Acres

Ellerslie, Edmonton, AB

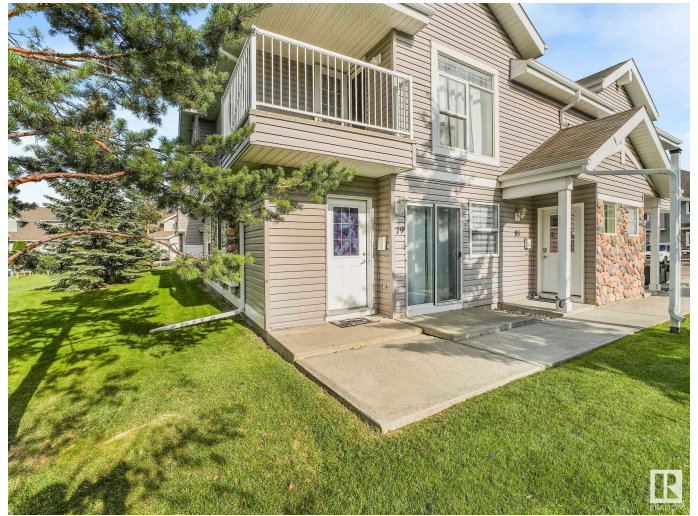
Stylish & Functional, First Time Home Buyers Delight!!! Here's your invitation to discover this charming 2 bedroom carriage-style bungalow. This ground floor corner unit, ready for quick possession is superbly situated facing onto & surrounded by well cared for green space. West facing entrance & inviting foyer leads you to Bright & Cozy open-great room style living space combining the living, kitchen and dining area. Spacious Primary & Second bedrooms backs onto North Facing green space. Enjoy beautiful privacy & green space views thru large windows. Features include in floor heating, upgraded timeless white cabinetry, stainless steel appliances, ceramic tile flooring & in-suite laundry. Assigned parking stall is steps from the unit. Great floor plan offering mobility friendly convenience & LOW CONDO fees includes; heat, water, & drainage & common areas maintenance making this your preferred choice. This is a great starter or investment property needs nothing but a new owner to call it a HOME!

Built in 2005

Essential Information

MLS® # E4449495

Price \$199,900



Bedrooms	2
Bathrooms	1.00
Full Baths	1
Square Footage	752
Acres	0.00
Year Built	2005
Type	Condo / Townhouse
Sub-Type	Carriage
Style	Bungalow
Status	Active

Community Information

Address	79 150 Edwards Drive
Area	Edmonton
Subdivision	Ellerslie
City	Edmonton
County	ALBERTA
Province	AB
Postal Code	T6X 1M4

Amenities

Amenities	No Animal Home, No Smoking Home, Parking-Plug-Ins, Parking-Visitor, Storage-In-Suite
Parking Spaces	1
Parking	Stall

Interior

Appliances	Dishwasher-Built-In, Hood Fan, Refrigerator, Stacked Washer/Dryer, Stove-Electric
Heating	In Floor Heat System, Natural Gas
Stories	1
Has Basement	Yes
Basement	None, No Basement

Exterior

Exterior	Wood, Stone, Vinyl
Exterior Features	Airport Nearby, Flat Site, Landscaped, Playground Nearby, Public Transportation, Shopping Nearby, See Remarks
Roof	Asphalt Shingles

Construction	Wood, Stone, Vinyl
Foundation	Concrete Perimeter

Additional Information

Date Listed	July 24th, 2025
Days on Market	5
Zoning	Zone 53
Condo Fee	\$399

DATA IS DEEMED RELIABLE BUT IS NOT GUARANTEED ACCURATE BY THE REALTORS® ASSOCIATION OF EDMONTON. COPYRIGHT 2025 BY THE REALTORS® ASSOCIATION OF EDMONTON. ALL RIGHTS RESERVED.Trademarks are owned or controlled by the Canadian Real Estate Association (CREA) and identify real estate professionals who are members of CREA (REALTOR®, REALTORS®) and/or the quality of services they provide (MLS®, Multiple Listing Service®)

Listing information last updated on July 28th, 2025 at 11:17pm MDT